

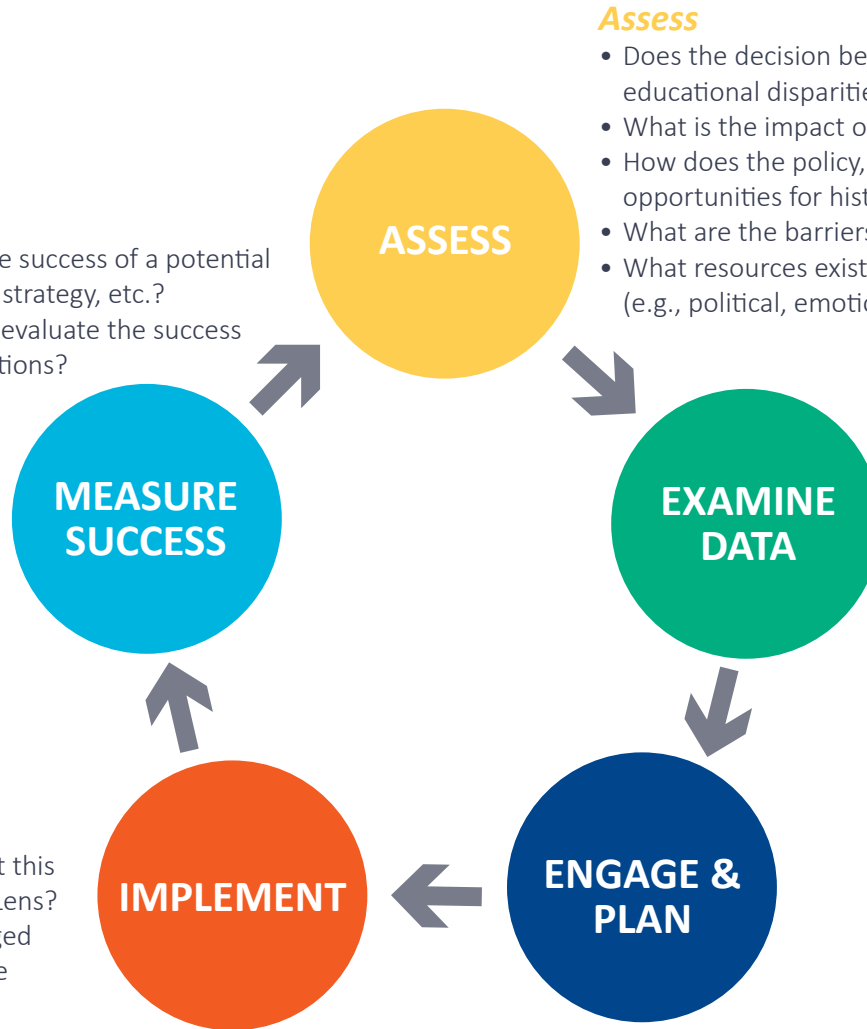
Equity Lens Framework: A Call to Action

Measure Success

- How do you identify and measure the success of a potential policy, initiative, resource allocation, strategy, etc.?
- Does that success measure properly evaluate the success relative to underrepresented populations?

Implement

- What is your decision after looking at this course of action through the Equity Lens?
- Has your approach or decision changed after looking at this topic through the Equity Lens?
- What action will be taken, if any?



Assess

- Does the decision being made maintain, sustain, or intervene in existing educational disparities, or does it produce other unintended consequences?
- What is the impact of this decision on eliminating attainment gaps?
- How does the policy, initiative, resource allocation, or strategy, etc. advance opportunities for historically underserved students and communities?
- What are the barriers to more equitable outcomes?
- What resources exist that could be leveraged to challenge these barriers (e.g., political, emotional, financial, programmatic, or managerial resources)?

Examine Data

- What does the current data tell us about representation among students, staff, and faculty groups? Check the source of the data for quality and impartiality.
- Where do current data collection methodologies fail to measure the extent of underrepresentation?
- Does your data infrastructure support forward-thinking measures of representation?
- What data sources will you use to understand the impacts of race, ethnicity, gender, and native language?
- Is qualitative data needed to support and better understand impacted communities more holistically?

Engage & Plan

- What is your commitment to, and understanding of, equity, specific to the policy, initiative, resource allocation, or strategy?
- What resources are you allocating for training that includes stakeholder instruction?
- How have campus and community stakeholders, who may be affected by this potential course of action, been purposefully involved?
- How will you modify or enhance your strategies to ensure the needs of the community and each learner's individual higher education and career goals are met?